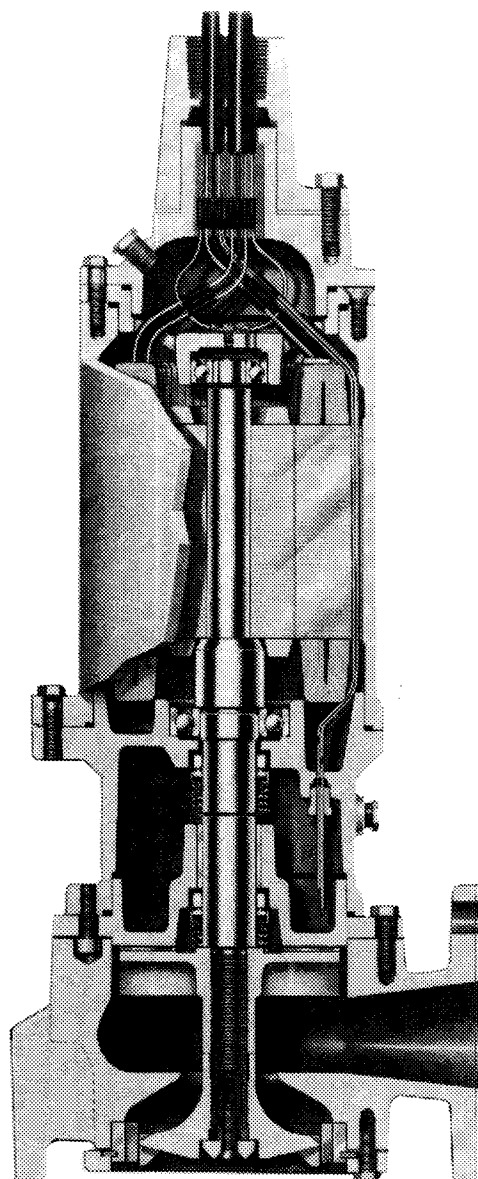


5200/407

Myers®

**WG30, WG30H, WG50,
WG50H & WG75H Series
Submersible Grinder
Pumps Parts List**

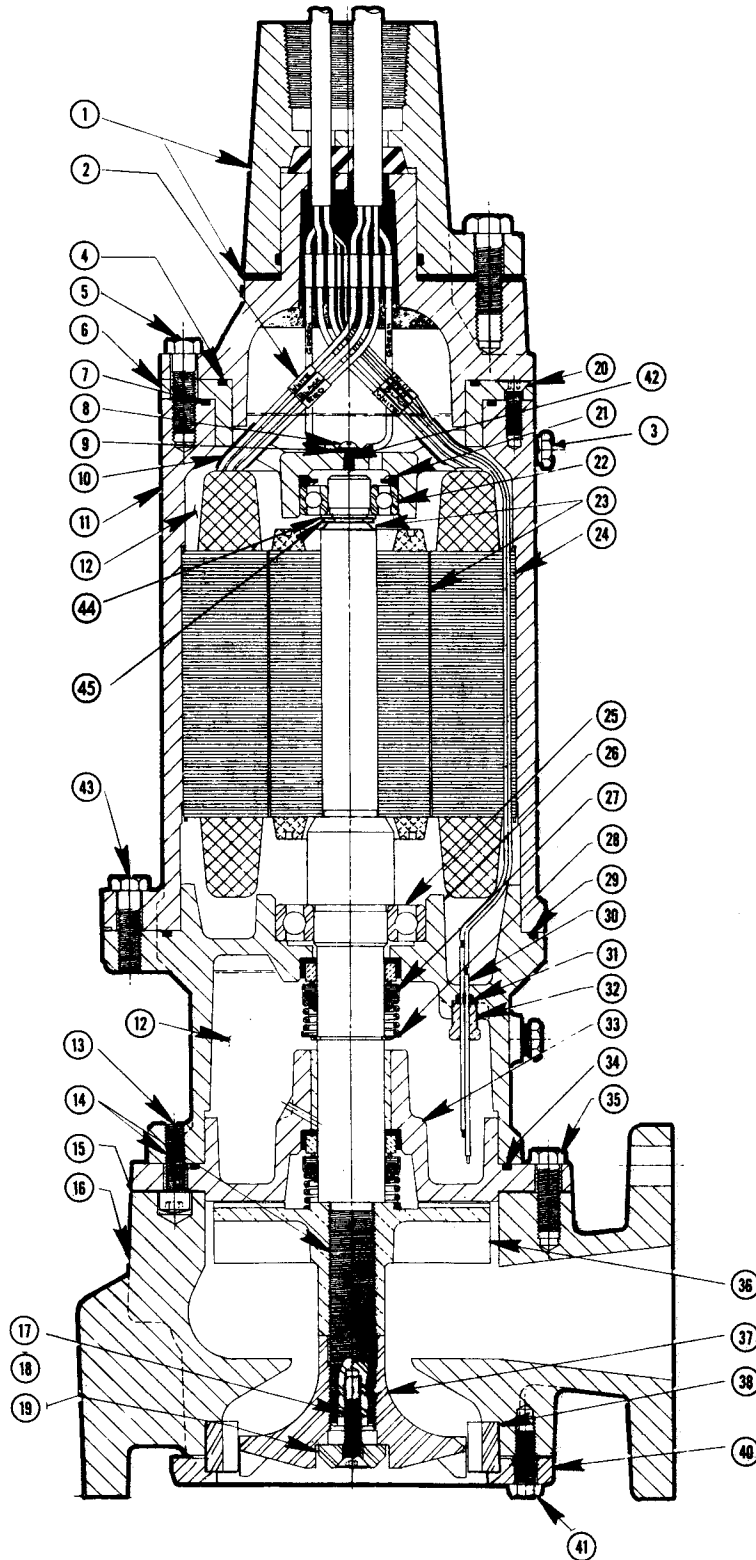


5200/408

WG30 & WG50 Submersible Grinder Pumps Parts List

Myers®

COVERS 3 & 5 HP — 1 AND 3 PHASE



WG30 & WG50 Submersible Grinder Pumps Parts List

Myers®

COVERS 3 & 5 HP - 1 AND 3 PHASE

Ref. No.	Description	No. Req.	Part Number
1	Cord Cap Complete - 3Ø 25' Cord	1	22569B010
	Length As Specified	1	22569B900
1	Cord Cap Complete - 1Ø 25' Cord	1	22569B011
	Length As Specified	1	22569B901
2	Connector	3	15781A007
3	Pipe Plug, ¼" NPT, Hex Hd.	2	5022A54
4	"O" Ring, 4 7/8" x 4 5/8" x 1/8"	1	5876A123
5	Cap Screw, Hex Hd., 7/16"-14 x 1 1/2"	4	19102A6
6	Cap, Upper Bearing	1	22590B
7	"O" Ring, 5 1/2" x 5 1/4" x 1/8"	1	5876A112
8	Machine Screw, #10-24 x 3/8" Lg.	1	5434A43
9	Lockwasher, #10	1	6107A15
10	Tube, Plastic, 1 1/4" Lg.	2	10649A102
	OR Tube, Plastic, 3" Lg.	2	10649A116
11	Housing, Motor	1	22571D
12	Oil, Transformer (5 Gal. Can)	1.6 Gal.	11009A6K
13	Cap Screw, Socket Hd., 3/8"-16 x 1 1/4"	4	6106A27
14	Lubricant, "Never Seez" Cat. No. NSBT-8, 8 Oz. Can	1	22386A
15	Gasket, Vellumoid	1	22581A
16	Case, Volute	1	22582D
17	Machine Screw, Socket Flat Hd., 5/16"-18 x 1 1/4"	1	7597A21
18	Sealant, Loctite Grade 271	1	14550A1
19	Retainer, Impeller	1	22585A
20	Machine Screw, Socket Flat Hd., 5/16"-18 x 1"	2	7597A17
21	Washer, Finger Spring	2	19331A6
22	Bearing, Ball	1	8565A22
23	Rotor with Shaft	1	See Chart
	Shaft Only (For All 3 & 5 HP Units)	1	22573C100
24	Stator	1	See Chart
25	Bearing, Ball	1	8565A23
26	Housing, Seal	1	22576D
27	Seal, 1 1/4" Shaft	2	22577A
28	Ring, Retaining	1	12558A8
29	"O" Ring, 7" x 6 3/4" x 1/8"	1	5876A114
30	Electrode, Wire	2	22578A
31	Ferrule, Rubber	1	22579A
32	Plug, Special	1	21577A
33	Housing, Lower Seal, with Bearing	1	22580C
34	"O" Ring, 6" x 5 3/4" x 1/8"	1	5876A113
35	Cap Screw, Hex Hd., 7/16"-14 x 1 1/4"	4	19102A20
36	Impeller, Pump, 3 HP (Specify O.D.) OR Impeller, Pump, 5 HP (Specify O.D.)	1	22583B510 22583B500
37	Impeller, Grinder	1	22584C
38	Ring, Shredding	1	22586B
40	Clamp, Shredding Ring	1	22587C
41	Cap Screw, Hex Hd., 3/8"-16 x 1"	4	19101A10
42	Washer, 7/16" x 1 3/16" x 1/32" Thick	1	5030A126
43	Cap Screw, Hex Hd., 7/16"-14 x 2 1/4"	4	19102A23
44	Washer, Support	1	05030A215
45	Ring, Retaining	1	12558A025

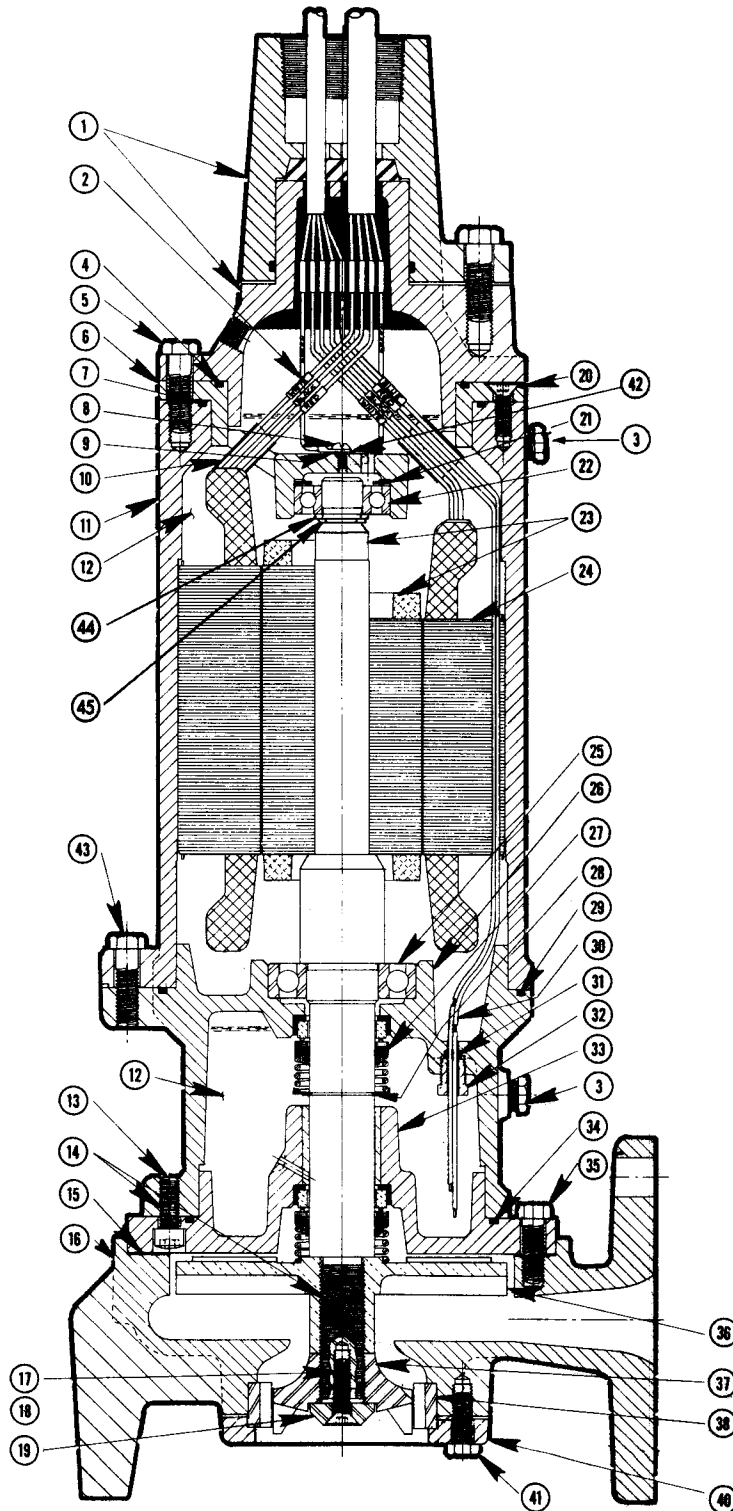
Pump Cat. No.	⑳ Rotor w/Shaft	㉑ Stator Only	Stator w/Housing
WG30-01	22572C103	22574C118	22571D445K
WG30-21	22572C103	22574C100	22571D220K
WG30-03	22572C102	22574C101	22571D225K
WG30-23	22572C102	22574C102	22571D231K
WG30-43	22572C102	22574C102	22571D231K
WG30-53	22572C102	22574C104	22571D240K
WG50-01	22572C103	22574C118	22571D445K
WG50-21	22572C103	22574C100	22571D220K
WG50-03	22572C102	22574C101	22571D225K
WG50-23	22572C102	22574C102	22571D231K
WG50-43	22572C102	22574C102	22571D231K
WG50-53	22572C102	22574C104	22571D240K

5200/410

WG30H, WG50H & WG75H Submersible Grinder Pumps Parts List

Myers®

COVERS 3 & 5 HP — 1 AND 3 PHASE & 7 1/2 HP — 3 PHASE



WG30H, WG50H & WG75H Submersible Grinder Pumps Parts List

Myers®

COVERS 3 & 5 HP - 1 AND 3 PHASE & 7½ hp - 3 PHASE

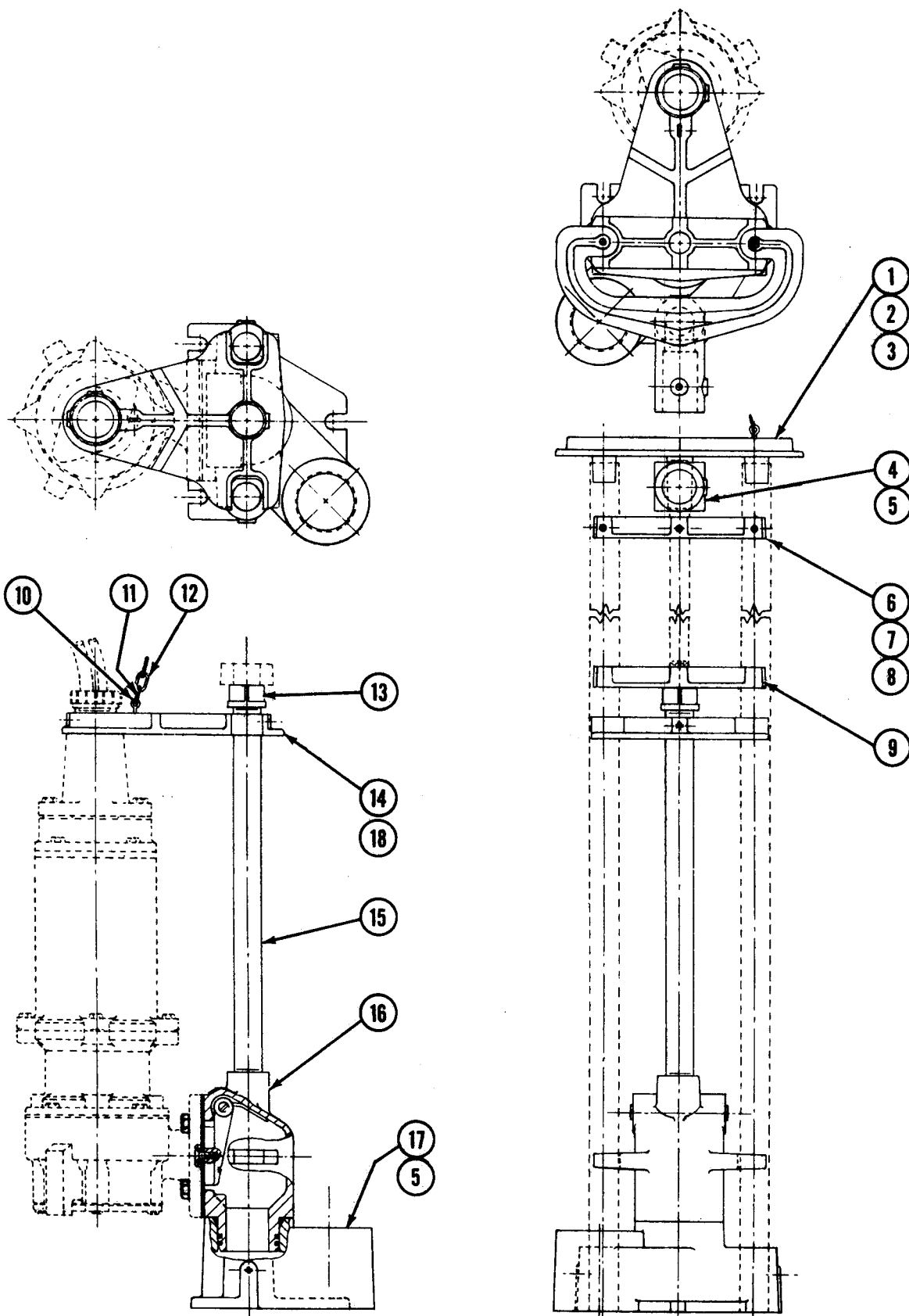
Ref. No.	Description	No. Req.	Part Number
1	Cord Cap Complete - 3 HP, 1Ø and All 3Ø 25' Cord Length As Specified	1	22569B010
1	Cord Cap Complete - 5 HP, 1Ø 25' Cord Length As Specified	1	22569B011
2	Connector	3	15781A007
3	Pipe Plug, ¼" NPT, Hex Hd.	2	5022A54
4	"O" Ring, 47/8" x 49/8" x 1/8"	1	5876A123
5	Cap Screw, Hex Hd., 7/16"-14 x 1½"	4	19102A6
6	Cap, Upper Bearing	1	22590B
7	"O" Ring, 5½" x 5¾" x 1/8"	1	5876A112
8	Machine Screw, #10-24 x 3/8" Lg.	1	5434A43
9	Lockwasher, #10	1	6107A15
10	Tube, Plastic, 1¼" Lg. OR Tube, Plastic, 3" Lg.	2	10649A102
11	Housing, Motor	1	22571D
12	Oil, Transformer (5 Gal. Can)	1.6 Gal.	11009A6K
13	Cap Screw, Socket Hd., 3/8"-16 x 1"	4	6106A28
14	Lubricant, "Never Seez" Cat. No. NSBT-8, 8 Oz. Can	1	22386A
15	Gasket, Vellumoid	1	5231A78
16	Case, Volute	1	22639D
17	Machine Screw, Socket Flat Hd., 5/16"-18 x 1¼"	1	7597A21
18	Sealant, Loctite Grade 271	1	14550A1
19	Retainer, Impeller	1	22585A
20	Machine Screw, Socket Flat Hd., 5/16"-18 x 1"	2	7597A17
21	Washer, Finger Spring	2	19331A6
22	Bearing, Ball	1	8565A22
23	Rotor with Shaft Shaft Only (For All 3, 5, 7½ HP Units)	1	See Chart 22637C100
24	Stator	1	See Chart
25	Bearing, Ball	1	8565A23
26	Housing, Seal	1	22576D
27	Seal, 1¼" Shaft	2	22577A
28	Ring, Retaining	1	12558A8
29	"O" Ring, 7" x 6¾" x 1/8"	1	5876A114
30	Electrode, Wire	2	22578A
31	Ferrule, Rubber	1	22579A
32	Plug, Special	1	21577A
33	Housing, Lower Seal, with Bearing	1	22638C
34	"O" Ring, 6" x 5¾" x 1/8"	1	5876A113
35	Cap Screw, Hex Hd., 7/16"-14 x 1¼"	4	19102A20
36	Impeller, Pump, 3 HP (Specify O.D.) OR Impeller, Pump, 5-7½ HP (Specify O.D.)	1	22583B502 22640C501
37	Impeller, Grinder	1	26010B000
38	Ring, Shredding	1	*25134B000
40	Clamp, Shredding Ring	1	22643B
41	Cap Screw, Hex Hd., 3/8"-16 x 1"	4	19101A10
42	Washer, 7/16" x 13/16" x 1/32" Thick	1	5030A126
43	Cap Screw, Hex Hd., 7/16"-14 x 2¼"	4	19102A23
44	Washer, Support	1	05030A215
45	Ring, Retaining	1	12558A025

Pump Cat. No.	②③ Rotor w/Shaft	②④ Stator Only	Stator w/Housing
WG30H-21	22636C101	22574C110	22571D245K
WG30H-03	22636C100	22574C111	22571D250K
WG30H-23	22636C100	22574C112	22571D255K
WG30H-43	22636C100	22574C112	22571D255K
WG30H-53	22636C100	22574C114	22571D265K
WG50H-21	22636C103	22574C100	22571D220K
WG50H-03	22636C102	22574C101	22571D225K
WG50H-23	22636C102	22574C102	22571D231K
WG50H-43	22636C102	22574C102	22571D231K
WG50H-53	22636C102	22574C104	22571D240K
WG75H-03	22636C102	22574C101	22571D225K
WG75H-23	22636C102	22574C102	22571D231K
WG75H-43	22636C102	22574C102	22571D231K
WG75H-53	22636C102	22574C104	22571D240K

*Effective after Sept. 1, 1990. New impeller and ring are interchangeable with previous impeller and ring.

RWG Series Rail System Parts List

Myers®





RWG Series Rail System Parts List

Ref. No.	Description	No. Req.	Part Numbers			
			Standard		Explosion Proof	
			RWGRH-300	RWGLH-300	RWGXRH-300	RWGXLH-300
1	Guide, Upper Rail	1	22610C	22610C	22610C	22610C
2	Eye Bolt, 3/8"-16 UNC x 1" Eye	1	21929A2	21929A2	21929A2	21929A2
3	Clevis, Chain Shackle, 1/4" Screw Type	1	22417A1	22417A1	22417A1	22417A1
4	Support, Rail Guide	1	22611B	22611B	22611B	22611B
5	Set Screw, Square Hd., 7/16"-14 UNC x 1"	6	5057A31	5057A31	5057A31	5057A31
6	Plate, Top Hold-down	1	22612B	22612B	22612B2	22612B2
7	Cap Screw, Hex Hd., 7/16"-14 JNC x 1"	4	19102A21	19102A21	19102A21	19102A21
8	Cap Screw, Hex Hd., 7/16"-14 UNC x 1 1/4"	2	19102A20	19102A20	19102A20	19102A20
9	Plate, Bottom Hold-down	1	22612B1	22612B1	22612B3	22612B3
10	Eye Bolt, 1/2"-13 UNC x 3/16" Eye	1	21929A3	21929A3	21929A3	21929A3
11	Clevis, Chain Shackle, 5/16" Screw Type	1	22417A2	22417A2	22417A2	22417A2
12	Chain Assembly, 3/16" x 15 Ft.	1	23531A	23531A	23531A	23531A
13	Cap, 1 1/4" Pipe	1	5737A15	5737A15	5737A15	5737A15
14	Bracket, Top Guide	1	22613C	22613C	22613C1	22613C1
15	Pipe, 1 1/4" x 23"	1	5917A129	5917A129	5917A129	5917A129
16	Check Valve Assembly Complete	1	22602D	22602D	22602D1	22602D1
	Body, Check Valve	1	22604D	22604D	22604D1	22604D1
	Valve, Flapper	1	22605B10	22605B10	22605B11	22605B11
	Shaft	1	22607A	22607A	22607A	22607A
	Bearing, .627 x .878 x 3/4" Lg.	2	5806A36	5806A36	5806A36	5806A36
	Spring	1	22608B	22608B	22608B	22608B
	Pipe Plug, 3/4" NPT, (Crsk. Hd.)	2	5022A19	5022A19	5022A19	5022A19
	Gasket, Beveled Rubber, 3 1/2" I.D.	1	5085A9	5085A9	5085A9	5085A9
	"O" Ring, 3 3/8" x 3" x 3/16"	2	5876A97	5876A97	5876A97	5876A97
	Gasket, Rubber 7" x 4" x 1/8" Thick	1	5231A77	5231A77	5231A77	5231A77
	Cap Screw, Hex Hd., 5/8"-11 x 1 1/2"	4	19105A3	19105A3	19105A3	19105A3
17	Case, Discharge	1	22609D	22609D1	22609D	22609D1
18	Set Screw, Sk. Hd., 7/16"-14 UNC x 3/4" Lg.	3	6024A10	6024A10	6024A10	6024A10

1101 Myers Parkway, Ashland, OH 44805-1923, 419/289-1144, FAX 419/289-6658 • Telex 98-7443