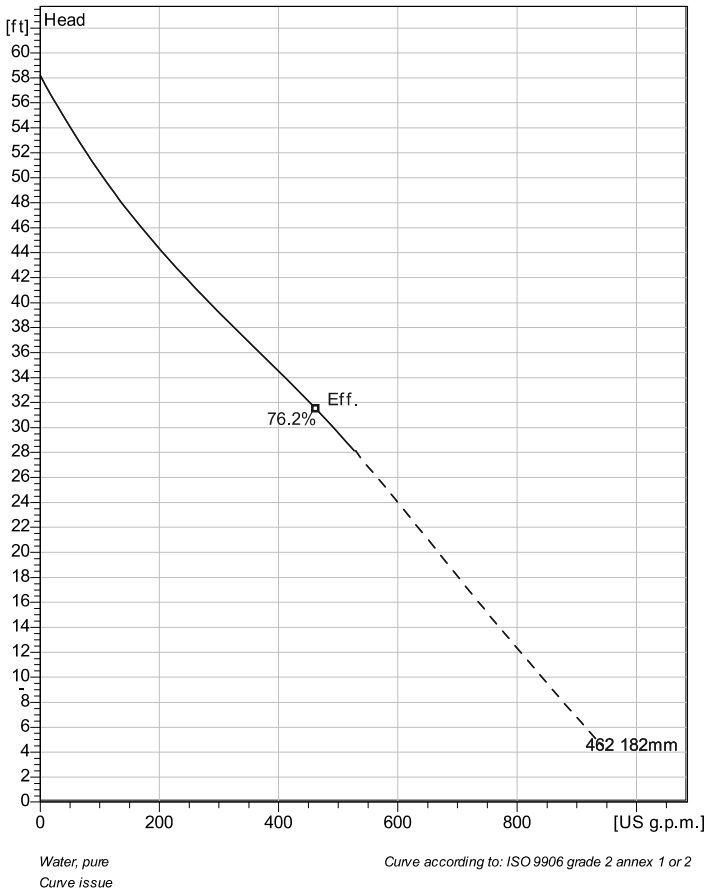


NP 3102 MT 3~ 462
Technical specification



Note: Picture might not correspond to the current configuration.

General

Patented self cleaning semi-open channel impeller, ideal for pumping in waste water applications. Possible to be upgraded with Guide-pin® for even better clogging resistance. Modular based design with high adaptation grade.

Impeller

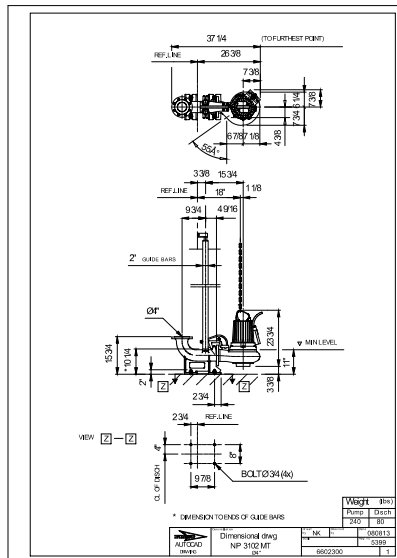
Impeller material	Hard-Iron™
Discharge Flange Diameter	3 15/16 inch
Suction Flange Diameter	100 mm
Impeller diameter	182 mm
Number of blades	2

Motor

Motor #	N3102.185 18-11-4AL-W 5hp
Stator variant	1
Frequency	60 Hz
Rated voltage	460 V
Number of poles	4
Phases	3~
Rated power	5 hp
Rated current	6,8 A
Starting current	42 A
Rated speed	1745 rpm
Total moment of inertia	0.6763 lb ft ²
Power factor	
1/1 Load	0.81
3/4 Load	0.75
1/2 Load	0.63
Efficiency	
1/1 Load	85.0 %
3/4 Load	85.0 %
1/2 Load	83.5 %

Configuration

Installation: P - Semi permanent, Wet



Project	Project ID	Created by	Created on	Last update
			2014-10-02	

NP 3102 MT 3~ 462

Performance curve

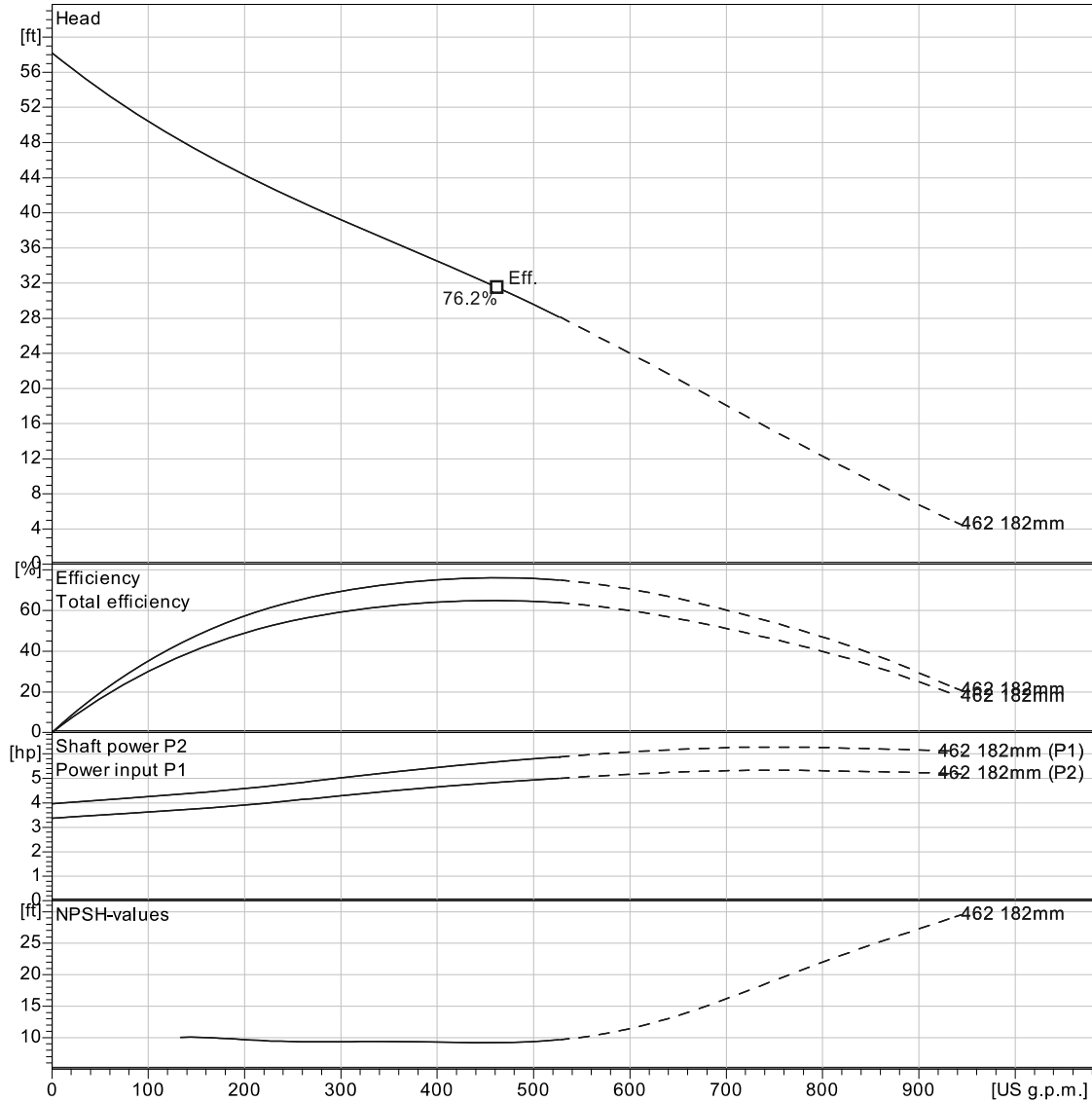
Pump

Discharge Flange Diameter 3 15/16 inch
Suction Flange Diameter 100 mm
Impeller diameter 7^{3/16}"
Number of blades 2

Motor

Motor # N3102.185 18-11-4AL-W 5hp
Stator variant 1
Frequency 60 Hz
Rated voltage 460 V
Number of poles 4
Phases 3~
Rated power 5 hp
Rated current 6.8 A
Starting current 42 A
Rated speed 1745 rpm
Total moment of inertia 0.6763 lb ft²

Power factor
1/1 Load 0.81
3/4 Load 0.75
1/2 Load 0.63
Efficiency
1/1 Load 85.0 %
3/4 Load 85.0 %
1/2 Load 83.5 %



Water, pure
Curve issue

Curve according to: ISO 9906 grade 2 annex 1 or 2

Project	Project ID	Created by	Created on 2014-10-02	Last update
---------	------------	------------	--------------------------	-------------

